

Rapid Response Orthoimagery



Spring flood waters on the Saint John River throughout the Province of New Brunswick continued to rise, reaching levels not seen since 1973. Flood waters engulfed entire communities, forcing the evacuation of thousands from their home and causing serious damage to homes and infrastructure. The environmental impact was tremendous, as petroleum products and other harmful chemicals entered the river, damaging an already fragile eco-system and essential agricultural areas.

During the crisis, Leading Edge Geomatics (LEGeo) quickly mobilized to the region from an aerial survey outside of the province to provide rapid response support to the Emergency Measures Organization (EMO). On a daily basis, LEGeo and EMO worked closely in an effort to acquire imagery of affected areas, as the flood waters moved through more than 1500 kilometers of rivers, tributaries and lakes.

At very short notice, Leading Edge Geomatics was capable of mission planning and launching an aerial survey team within 60 minutes. Following acquisition, the directly georeferenced Orthoimagery was processed and delivered to the EMO within 24-36 hours. This rapid response continued for 7 days until LEGeo acquired more than 7000 km² for the Province of New Brunswick, at an average of 1000 km² per day.

"LEGeo played a vital role during the 2008 flood response, providing provincial emergency agencies with near real-time hi-resolution imagery. Their capabilities and product enabled us to define the areas of greatest concern, assess quickly the risks to critical infrastructure and the environment and to establish a high water contour and the means to enable the officials and the public to better assess future flood risk. LEGeo offered an excellent level of service and made a very significant contribution to the provincial disaster operation." – Ernest MacGillivray, Director of the New Brunswick Emergency Measures Organization



2398 Route 102 Hwy
Lincoln, New Brunswick
E3B 7G1
(506) 446-4403



Image Courtesy Of Google

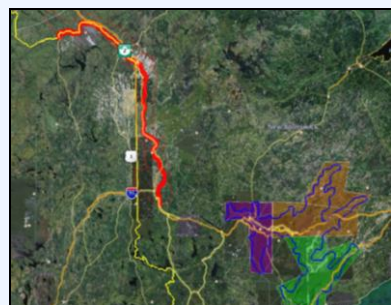


Image Courtesy of Google

Saint John River Valley, New Brunswick